

# Year 6 Journey of Life Home Learning

## Science

Create a family tree and describe what physical features you have that are the same as your parents or different to them.



You could also think about what is the same and different between yourself and your grandparents, e.g. eye colour or height.

## History

Find out how Colindale has changed over the years: population, transport, economy, education and housing. Did the changes make a positive or negative impact on the local community? Present this in a poster.



## Geography



Travel from your home to

your new school then create a map of your journey, plotting your route and key human and physical features you pass.

## Art



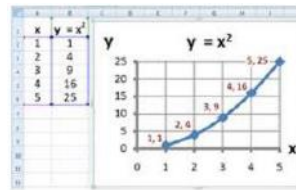
Research the artists Henry Moore and Evelyn Dunbar. Practise creating a sketch in the style of Henry Moore. Remember to add shade to create an effect.

## DT

Create a photo collage of you and your family at different stages of life. This can include sayings, book titles or a map of somewhere you may have visited.



**Computing** Excel – How many line graphs can you create using algebraic formulas.



Try this:  $x + 1 = y$  or  $2x = y$  or  $y = x^2$

**RE** Find out the different ways religions often see life as a journey with rituals that celebrate each stage. Create a timeline of your life so far, including special and significant events in your life.

## PSHE

Write/draw a journey of your achievements in time order. Think about three or more things you are proud of. What have you achieved? How did you get there? Then think about what is next; what are some challenges you may face?



**RRSA Article 24** Every child has the right to the best possible health. Governments must provide good quality health care, clean water, nutritious food and a clean environment.

Discuss the above at home.

**PE** Click on the link below. Choose 5 different countries to learn about. You will need to find out what kind of children's games they play in this country.

[https://www.britishcouncil.org/sites/default/files/international\\_inspiration\\_traditional\\_games\\_-\\_map\\_of\\_the\\_world.pdf](https://www.britishcouncil.org/sites/default/files/international_inspiration_traditional_games_-_map_of_the_world.pdf)

**Choose 1 activity each week to complete at home. You can bring your completed work to school, where it will be displayed in your classroom.**