

Year 6 Journey of Life Home Learning

Science

Create a family tree and describe what physical features you have that are the same as your parents or different to them.



You could also think about what is the same and different between yourself and your grandparents, e.g. eye colour or height.

History

Find out how Colindale has changed over the years: population, transport, economy, education and housing. Did the changes make a positive or negative impact on the local community? Present this in a poster.



Geography



Travel from your home to

your new school then create a map of your journey, plotting your route and key human and physical features you pass.

Art

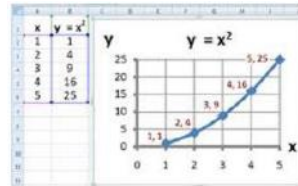


Research a famous artist that depicts Aboriginal art journeys. Using what you've learnt of the signs and symbols create a journey of your life.

DT Create a photo collage of you and your family at different stages of life. This can include sayings, book titles or a map of somewhere you may have visited.



Computing Excel – How many line graphs can you create using algebraic formulas.



Try this: $x + 1 = y$ or $2x = y$ or $y = x^2$

RE Find out the different ways religions often see life as a journey with rituals that celebrate each stage. Create a timeline of your life so far, including special and significant events in your life.

PSHE Below are different types of government. Write a definition for each. 1) Write a list of countries where this type of government exists/existed. 2) Write the positives and negatives of each government

- *Democracy, Communist,*



Autocracy/Dictatorship

RRSA Article 24 Every child has the right to the best possible health. Governments must provide good quality health care, clean water, nutritious food and a clean environment.

Discuss the above at home.

PE Click on the link below. Choose 5 different countries to learn about. You will need to find out what kind of children's games they play in this country.

https://www.britishcouncil.org/sites/default/files/international_inspiration_traditional_games_map_of_the_world.pdf

Choose 1 activity each week to complete at home. You can bring your completed work to school, where it will be displayed in your classroom.